

## Institute Compute Servers:

There are Two Linux based compute servers, which can be used for running your programs by accessing the servers remotely.

Servers IP Address are:

**Compute-1:** 10.2.60.11

**Compute-2:** 10.2.60.12

Both are running 24x7 with Redhat Linux OS.

You can access these servers remotely via ssh command from Linux OS terminal or using some ssh client software ( e.g. MobaXterm, putty, Bitwise SSH Client..... etc.) from Windows Machine.

For connecting to the servers, credentials has already been provided to the users.

## Procedure to connect to the server (Demo)

### Connection from a Linux Machine:

If you are working of a linux machine (e.g. Ubuntu, Centos.... Etc.)  
Open Terminal and type following command to connect the server.

```
$ ssh -X Username@10.2.60.11 (to access Compute -1)
```

Or

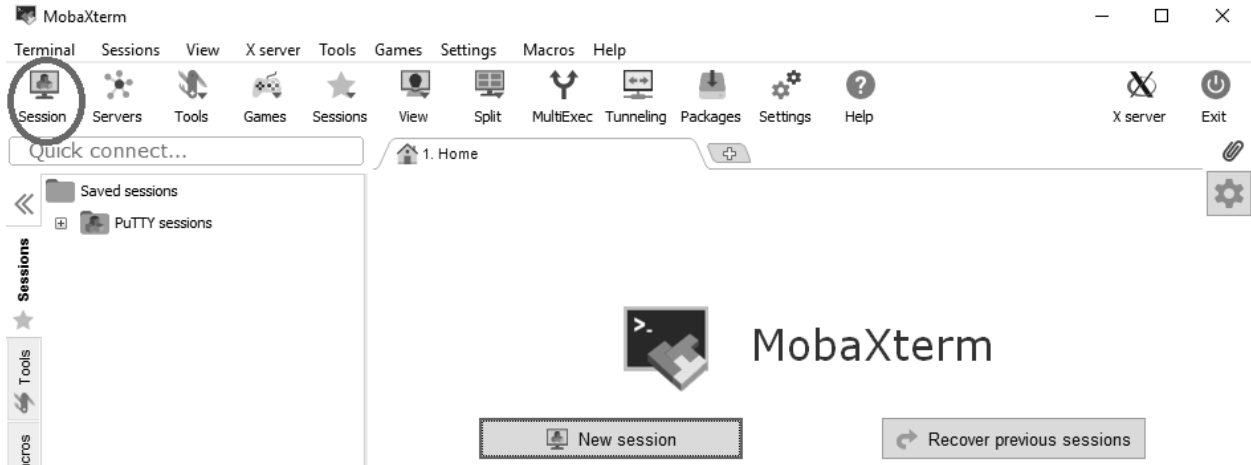
```
ssh -X Username@10.2.60.12 (to access Compute -2)
```

and press Enter. It will ask for your password. Enter the password you will be connected to the server.

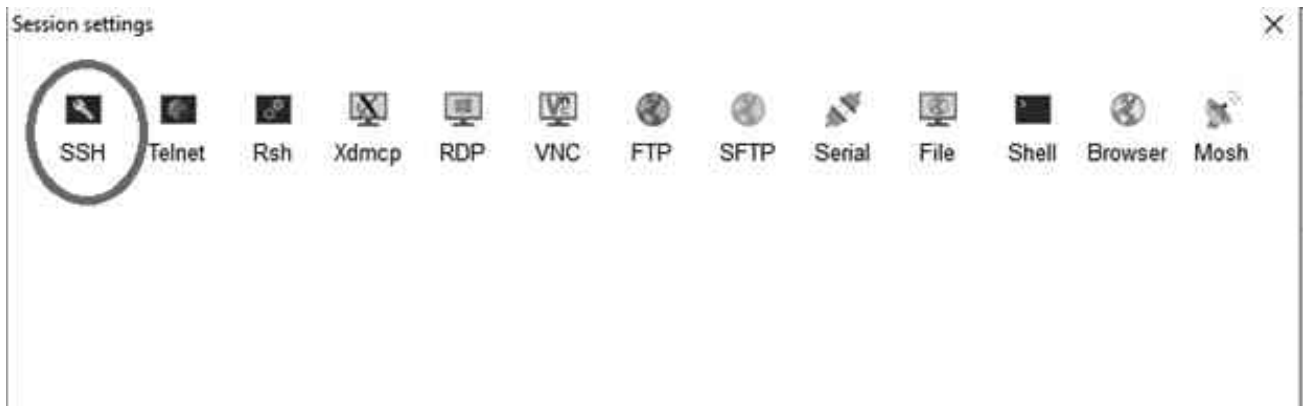
### Connection from a Windows Machine:

We can connect the server using MobaXtermssh Client using following steps:

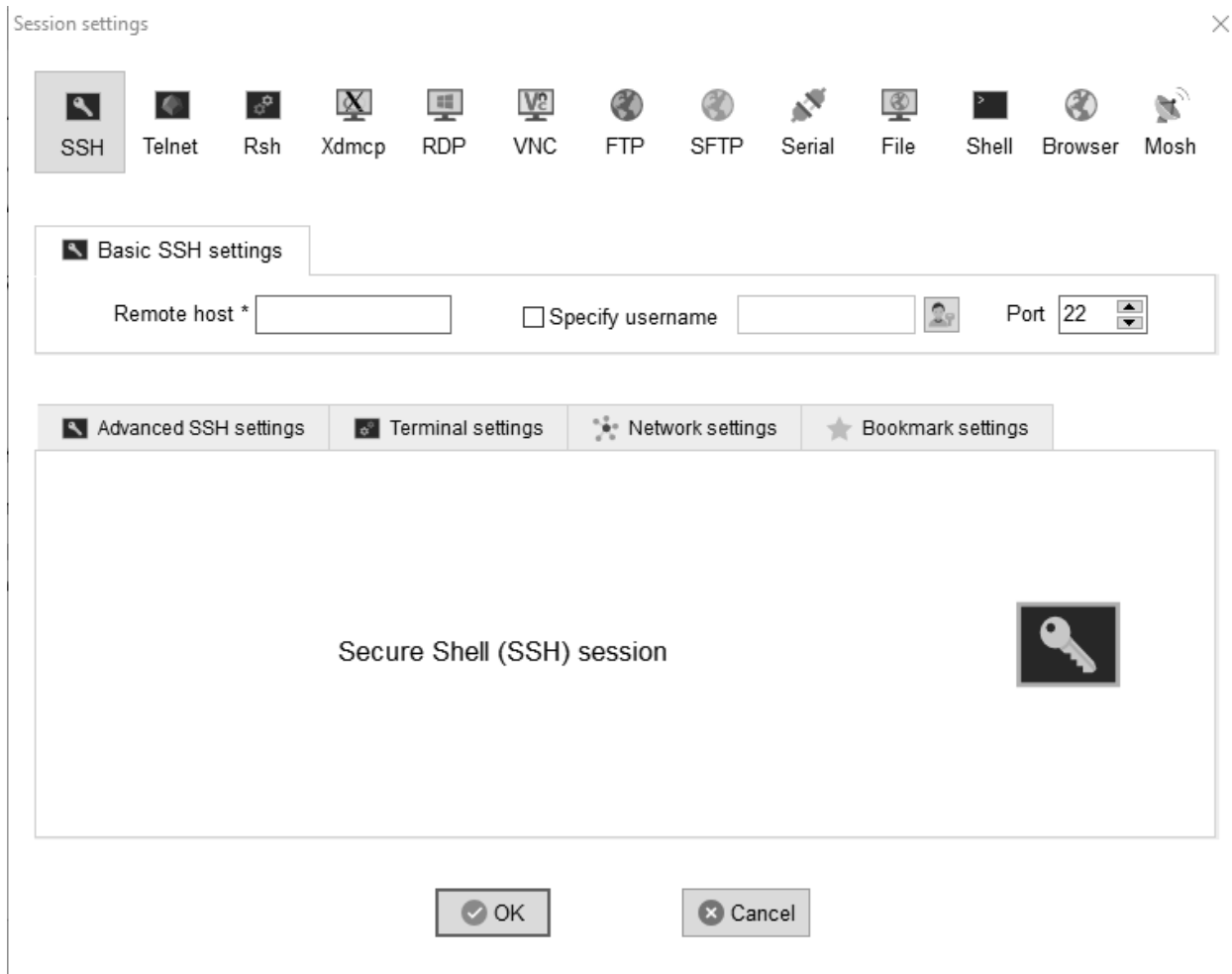
1. Download MobaXterm Client ( [Click Here](#) to Download) and Extract into some folder
2. Now run the .exe file. You will get following interface



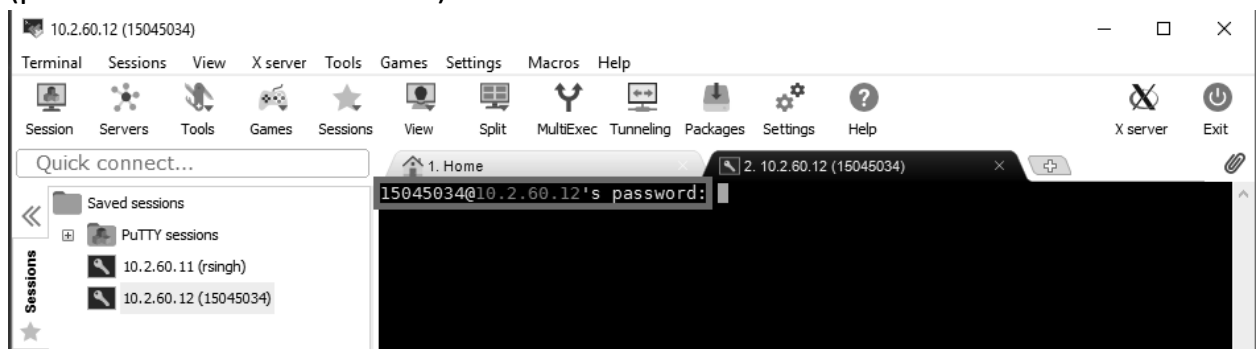
3. Click on Session (In Red Circle). You will get following window:



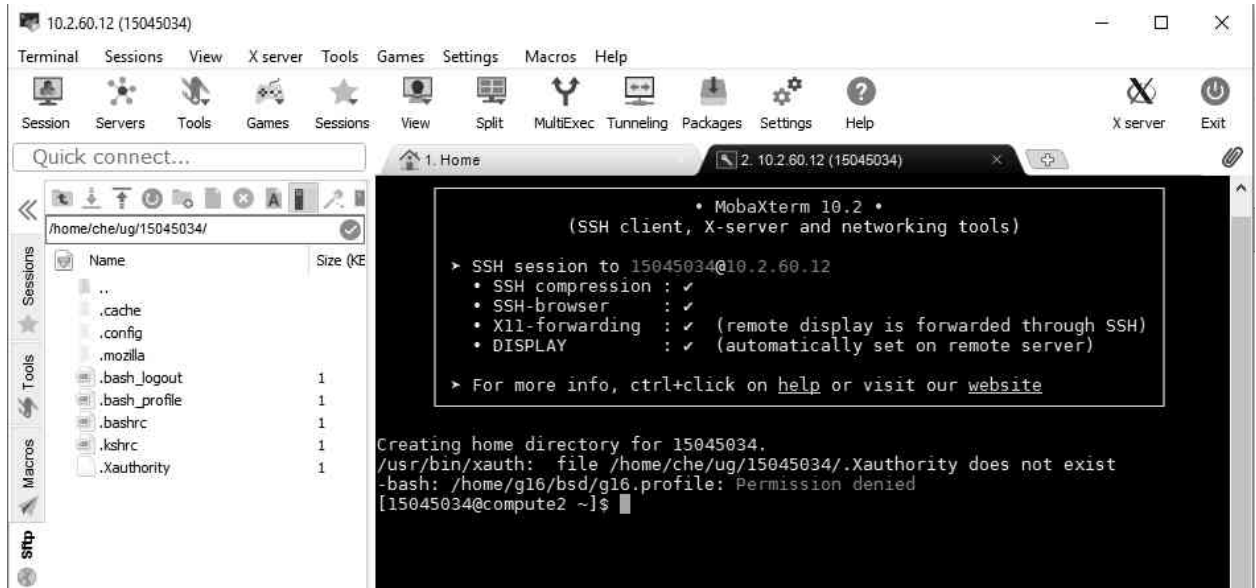
4. Click on ssh (In Red Circle). You will get following window:



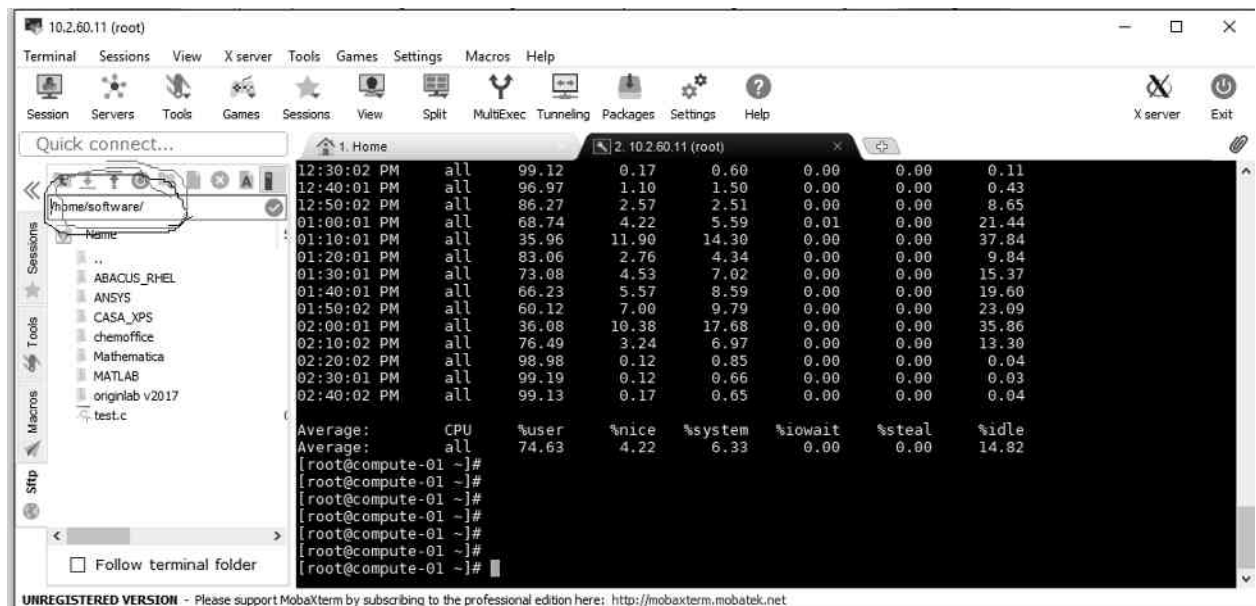
5. Enter Remote host as **10.2.60.11** or **10.2.60.12**( IP address of the server to which you want to connect)
6. Check the Specify username option, type your username in the box, and click on ok button.
7. On the next screen it will ask for your password. Enter your password (password will not be visible).



8. After entering the complete password press Enter, you will get the server terminal as below screen after successful login.



9. Now you can download software set up from the server  
Setup File location is - **/home/software**



10. You can download Matlab, Mathematica, Ansys, Originlab etc.. from there.

## Installation Procedure for various Software:

### License servers

Matlab – 10.2.60.11

Mathmatica – 10.2.60.11

Ansys – 10.2.60.16

Origin Lab – 10.2.60.16

Abaqus – 10.2.60.16

### ANSYS:

You can download the software from following locations on the Institute Server(**10.2.60.11** or **10.2.60.12**) via **scp** or **sftp** (You can you filezila or MobaXterm).

**/home/software/ANSYS** (Choose Appropriate package for Windows OR Linux)

For Accesing these servers your login credentials are ( You can use Bitvise SSH Client or MobaXterm to connect from Windows OS)

username - xxxxxxxxx

password- xxxxxxxxx

After downloading complete software, run setup from **Disc-1**,  
When prompted for license server machine id, enter **10.2.60.16**  
When prompted, browse for the **Dics-2**.

Further If you want to install Electronics tool. Can be installed from the Electronics folder.

### MATLAB:

After downloading complete software, run setup from **Disc-1**,

When prompted for File Installation Key Enter (for MATLAB 2017a)

51258-19817-17031-30999-43093-38120-11999-61254-30685-12655-00334-40832-11104-  
47753-30950-21651-38024-37147-06064-02298

Proceed next

When asked for the License file select **network.lic** file and proceed next

When prompted for Disc-2 mount Second ISO File at the same location.

### Mathematica:

After Downloading the appropriate file from server, Run the setup.exe

Follow the setup process and when asked for license server, Enter – **10.2.60.11**

## **Origin LAB:**

Download the software and install using setup.exe and the given serial key.

Follow the setup process and when asked for license server, Enter – **10.2.60.16**

## **MedeA VASP (Access restricted):**

MedeA VASP is installed on 10.2.60.12 in directory /home/medea/MD/

For starting the application (Use MobaXterm for better access)

```
cd/home/medea/MD/Linux-x86_64
```

```
./MedeA
```

Access of this software is given to faculty supervisors only.

## **Gaussian, Gauss View and TCP Linda(Access restricted):**

This software is installed in directory /home

In folders gv and g16

Access of this software is given to faculty supervisors only.

## **Chem Office:**

### **INDIVIDUAL LOGIN:**

Individual users can download the software via this link:

<http://sitelicense.cambridgesoft.com/sitelicense.cfm?sid=3002>

Only the individual who have email extensions as @iitbhu.ac.in can download and activate the software.

Proceed with your institute email id and register. You will get a code through email.

Install the software and register online using this code.

## **ABAQUS**

for running abaqus on (10.2.60.11 and 10.2.60.12)

Run following command:

```
/home/SIMULIA1/linux_a64/code/bin/ABQLauncher cae -mesa
```

## **CASA XPS:**

Download Casa XPS from /home/software location, install the software, contact computer unit for registration credentials

In case of any problem you can contact Mr. Roshan Singh